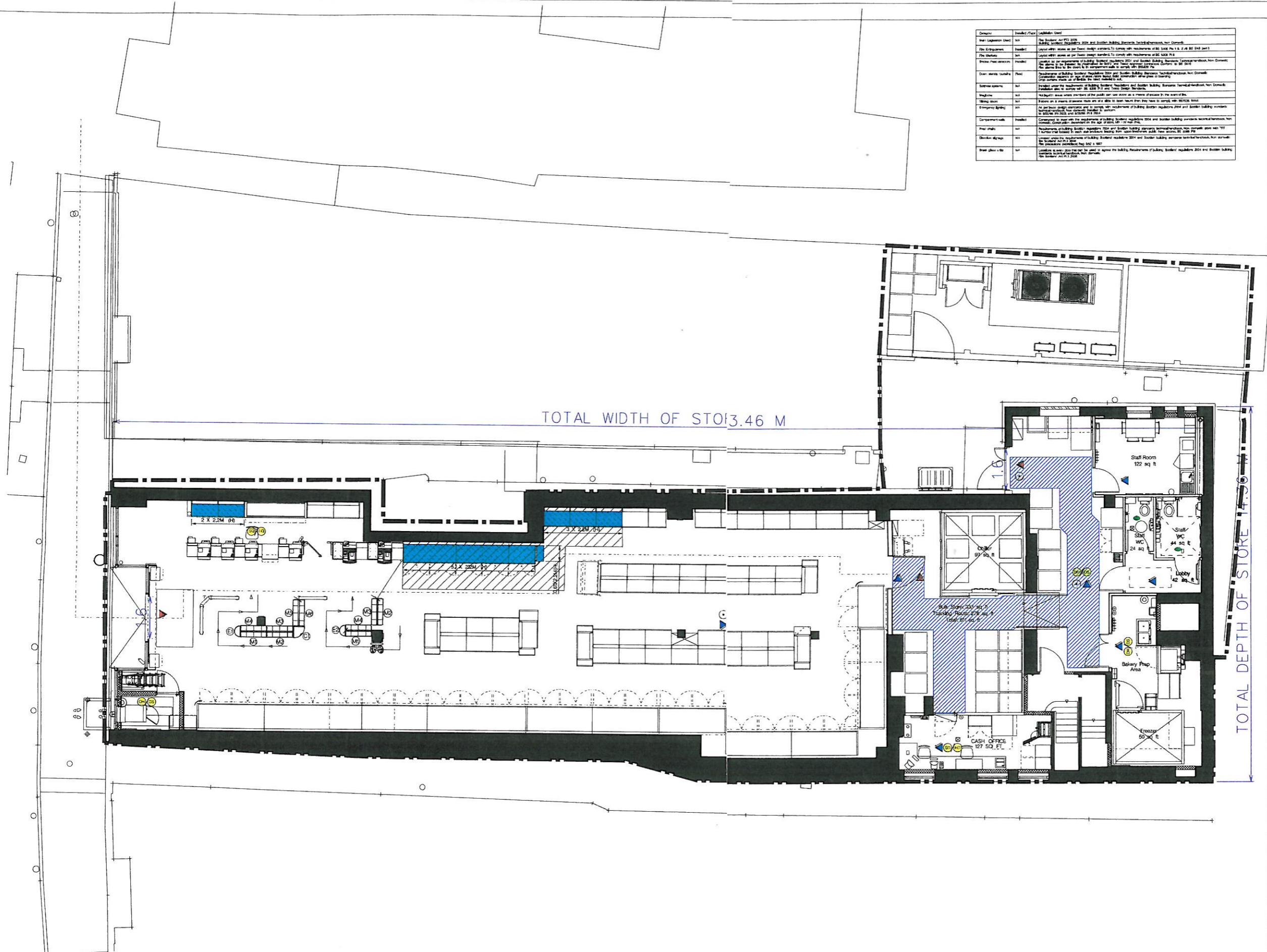


Component	Standard / Code	Legislation / Note
Structural Steel	BS 5950	BS 5950: Part 1: 2000
Steel Joists	BS 5950	BS 5950: Part 1: 2000
Concrete	BS 8100	BS 8100: Part 1: 2000
Reinforcement	BS 4449	BS 4449: Part 1: 2000
Brickwork	BS 5628	BS 5628: Part 1: 2000
Roofing	BS 5534	BS 5534: Part 1: 2000
Windows	BS 6891	BS 6891: Part 1: 2000
Doors	BS 8886	BS 8886: Part 1: 2000
Handrails	BS 7175	BS 7175: Part 1: 2000
Staircases	BS 5634	BS 5634: Part 1: 2000
Escalators	BS 5641	BS 5641: Part 1: 2000
Lifts	BS 5645	BS 5645: Part 1: 2000
Signage	BS 5499	BS 5499: Part 1: 2000
Lighting	BS 5499	BS 5499: Part 1: 2000
Electrical	BS 7671	BS 7671: Part 1: 2000
Plumbing	BS 6891	BS 6891: Part 1: 2000
Mechanical	BS 5534	BS 5534: Part 1: 2000
Acoustic	BS 5534	BS 5534: Part 1: 2000
Fire	BS 5832	BS 5832: Part 1: 2000
Security	BS 7000	BS 7000: Part 1: 2000
Accessibility	BS 6891	BS 6891: Part 1: 2000

REV.	REVISIONS	DATE
2#	TOTAL LICENCED FRONTAGE IN M 50 - 24 SQM	



ADDRESS 140-142 High Street
Ayr
KA7 1PR

Disclaimer: Any information contained in this drawing which is not required by regulation 5 of SSI 2004/552 is included for illustrative purposes only and does not form part of the layout plan for the purposes of the said regulation or the Licensing (Scotland) Act 2005. This will prevent us requiring a new application when other areas of the store change.

CHILDREN ARE ALLOWED IN ALL PUBLIC AREAS OF THE PREMISES

- LEGEND
- SOUNDER
 - VISUAL INDICATOR (BEACON)
 - 6KG 27A FOAM & 2KG CO2 EXTINGUISHERS
 - AREA COVERED BY SMOKE DETECTION
 - BREAK GLASS CALL POINT

AREA TO BE USED FOR THE DISPLAY OF ALCOHOL PRODUCTS PACKED WITH AND WHICH MAY ONLY BE PURCHASED ALONG WITH ALCOHOL AND NON-ALCOHOLIC DRINKS

ADDRESS 140-142 High Street
Ayr
KA7 1PR

PROJECT
6345
AYR HIGH STREET EXP

DESCRIPTION
PROPOSED RETAIL LAYOUT
ALCOHOL LICENSE APPLICATION

DRAWING No. 6345GAG2#.DGN

PHASE ISSUE 2#

SYSTEM ID. No. 6345bg2#.dgn, 6345rg2#.dgn, 6345sp2#.dgn

SCALE DATE
1:100@A2 06.07.2010

PLANNER CHRIS BARRATT

DRAWN JAYASHREE

CHECKED RAJESHWARI



TESCO STORES LIMITED
STORE PLANNING DEPARTMENT
PROPERTY SERVICES
P.O. BOX 400, CIRRUS BUILDING, SHIRE PARK
WELWYN GARDEN CITY, HERTS, AL7 1GA
TELEPHONE : 01707 395150

THE COPYRIGHT AND ALL OTHER RIGHTS IN AND RELATED TO THIS PUBLICATION ARE RESERVED AND ARE THE SOLE PROPERTY OF TESCO STORES LIMITED. PERMISSION MAY BE REPRODUCED OR TRANSMITTED IN ANY FORM OR BY ANY MEANS, ELECTRONIC OR MECHANICAL, INCLUDING PHOTOCOPYING AND RECORDING OR FROM ANY INFORMATION SYSTEM WITHOUT THE PRIOR WRITTEN CONSENT FROM THE DESIGNER.